

RIVO BINA SDN. BHD.

WE WALL FOR YOU

Platform / Earth Retention



Abutment / Slope Protection



Riverbank / Coastal Protection

PRECAST CONCRETE SHEETPILE WALL

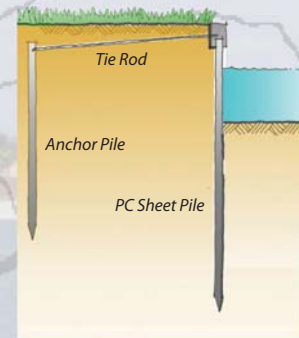
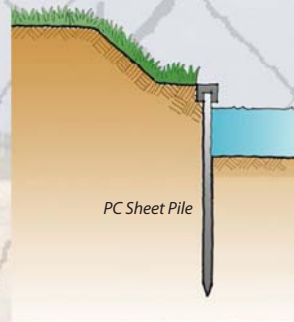
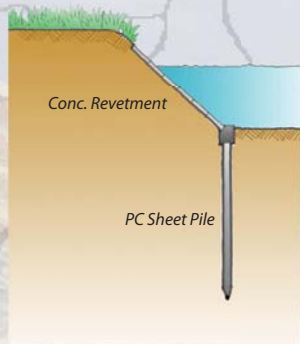
We provide design-and-build service for a complete range of proprietary sheetpiling wall systems using precast construction techniques and **patented** precast products.

The system consists of a series of precast concrete sections connect together via T & G joints to yield a continuous wall.

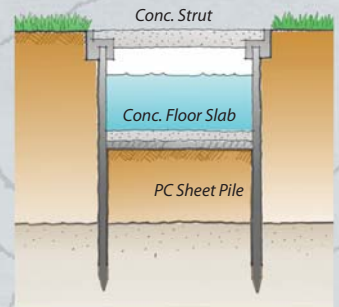
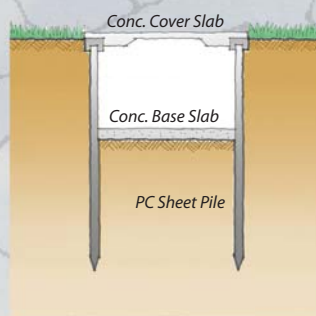
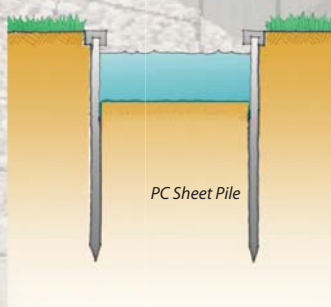


Application

- **Development Project** - building platform, earth retention and slope protection



- **Curvert / Bank Stabilization** - drain, canal, pond, lake and river



Advantageous Features

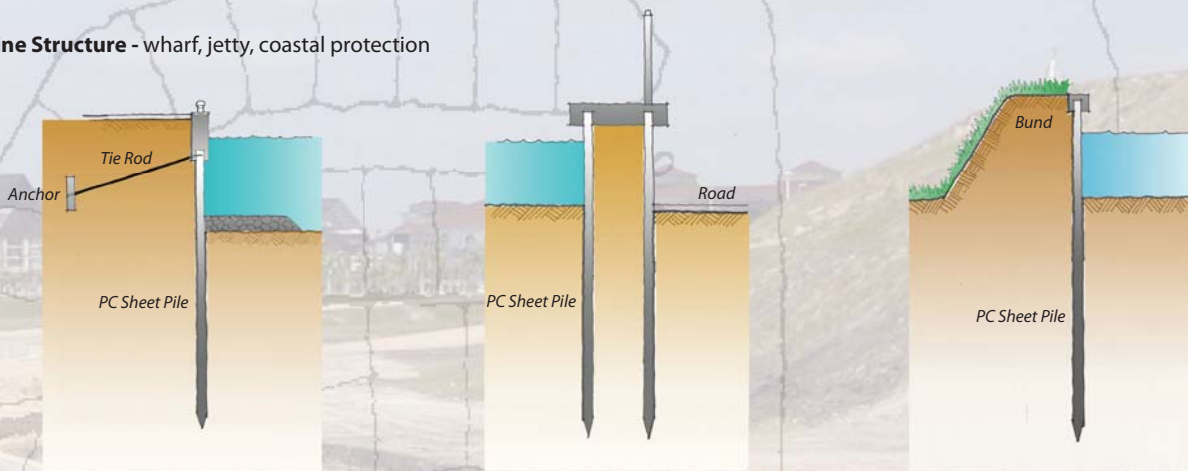
- **Space Saving**
The precast sheetpile method of construction alleviates site constraint problem that might arise during installation and / or at time of service.
- **Robustness**
Right section with in-built ribbed or corrugated profiles will facilitate driving and handling process.
- **Cost Effective**
Efficient wall section designed significantly minimises foundation cost.
- **Corrosion Free**
Being corrosion free it will entail no treatment cost.



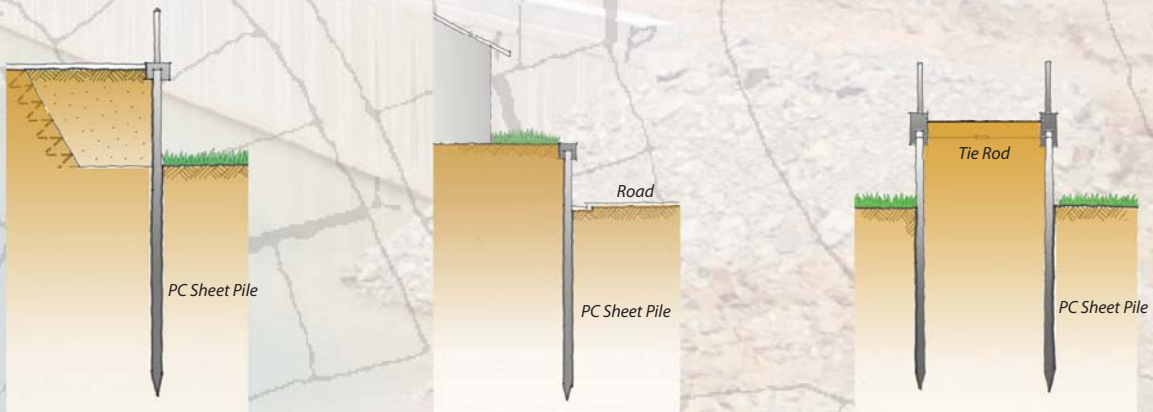
The sheetpile wall serves generally to resist lateral earth pressure. The stability is derived from passive earth pressure mobilized in front the embedded toe of the wall. Additional support to the wall, however is skillfully achieved through the deployment of a system of anchors, ties, struts placed at a higher level behind the wall.



• **Marine Structure** - wharf, jetty, coastal protection



• **Roadwork / Railway / Highway Construction** - embankment, bridge, abutment and wingwall



Conventional Steel Sheetpiling	Precast Concrete Sheetpiling
<ul style="list-style-type: none"> • Flimsy, possibility of buckling within thin section • Corrosion, vulnerable to exposure conditions • Protective coating: not practical and costly • Short lifespan, high maintenance costs • Escalating costs of steel 	<ul style="list-style-type: none"> • Robust with rigid concrete section in special profiles • Special cement and thicker concrete cover • Inherent durable properties of concrete • Maintenance free with concrete structure • Stable price, less affected by price fluctuation

PRECAST CONCRETE SHEETPILE / SOLDIER PILE WALL

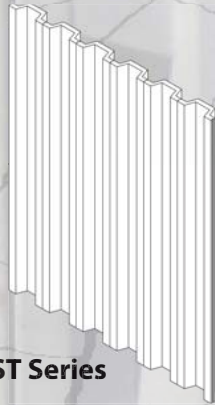
A Revolutionary Precast Alternative to the Conventional Sheetpiling

Types / Series

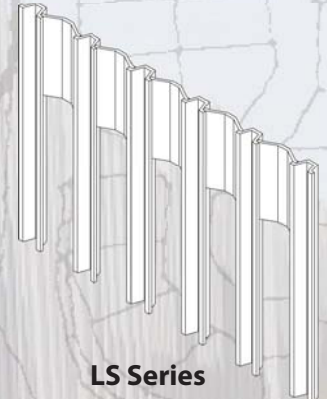
Two series of precast sheetpiles are designed to cater for various application in different site conditions.

ST Series - suitable for soft clayey / silty or loose sandy soils.

LS Series - suitable for medium stiff silty / medium dense sandy soils.



ST Series



LS Series

Design / Specification

- Reinforced concrete design to BS8110
- Concrete grade $f_{cu} = 30 - 40$ MPa (for standard design)
- Superimposed load = 5 - 10 kPa (for standard design)
- Higher grades or loading specification can be customized to meet specific project requirements
- A comprehensive range of sections in varied sizes, weights and combinations is obtainable on request

Installation

- Vibro-hammer or hydraulic / drop hammer to site condition
- Work sequence:
 - Site Clearing / Preparation of access and working platform
 - Setting out alignment / Install guide-frame
 - Pitch, position and drive

Manufacture

- Cement (OPC) to MS522
- Aggregate (20mm) to MS29
- Steel Bar to MS146
- Admixture to MS922



RIVO BINA SDN. BHD.

Lot 5127, Batu 6, Jalan Kenangan, Off Jalan Meru,
41050 Klang, Selangor Darul Ehsan.

Tel: 603-3392 8113 Fax: 603-3392 9113 Mobile: 012-306 1813, 019-668 1369

E-mail: rivobina@gmail.com

Kuantan Branch:

B-2, Tingkat Satu, Lorong Sg. Isap Jaya 1, Perkampungan Sg. Isap Jaya, 25150 Kuantan, Pahang Darul Makmur.

Tel: 09-536 3430 Fax: 09-536 3431 Mobile: 012-921 8110 / 013-437 4799 Email: rivopt@gmail.com

Our range of products is constantly under review.
Data relating to new products will be issued when available.
We reserve the right to amend our specifications without prior notice.